

Errata Statement

Correction to the published Statement of Community Consultation (SoCC)

27 January 2025

This Errata Statement has been issued to address and correct an error identified in Figure 3 - Core Consultation Zone and Appendix 2 of the Statement of Community Consultation (SoCC) dated January 2025



1. Errata Statement – Overview

- 1.1. This Errata Statement has been issued to correct an error identified in the map shown in Figure 3 – Core Consultation Zone included on page 17 of the Statement of Community Consultation (SoCC) published on 14 January 2025.
- 1.2. The boundary for the core consultation zone shown in Figure 3 has been corrected. As a result of this amendment, the total number of addresses within the core consultation zone has increased from approximately 10,523 to around 14,187.
- 1.3. The revised figure of ‘around 14,187 addresses’ replaces the previously stated figure in **paragraph 7.7** of the SoCC, which should read as follows:

7.7. A Consultation Leaflet will be direct mailed to around 14,187 addresses which lie within the core consultation zone from 27 January 2025. Leaflets can also be posted to those outside the core consultation zone on request.
- 1.4. The corrected map, reflecting the full extent of the core consultation zone boundary, is included on page 3 of this document.
- 1.5. The corrected core consultation zone also replaces the core consultation zone shown on the map included in the SoCC on page 37 in ‘Appendix 2: Information event and community access point locations’.
- 1.6. The corrected map showing the full extent of the core consultation zone relative to the location of venues for in-person information events and where consultation materials are being lodged (Community Access Points) is included on page 4 of this document.



Core consultation zone (corrected as of 27 January 2025)

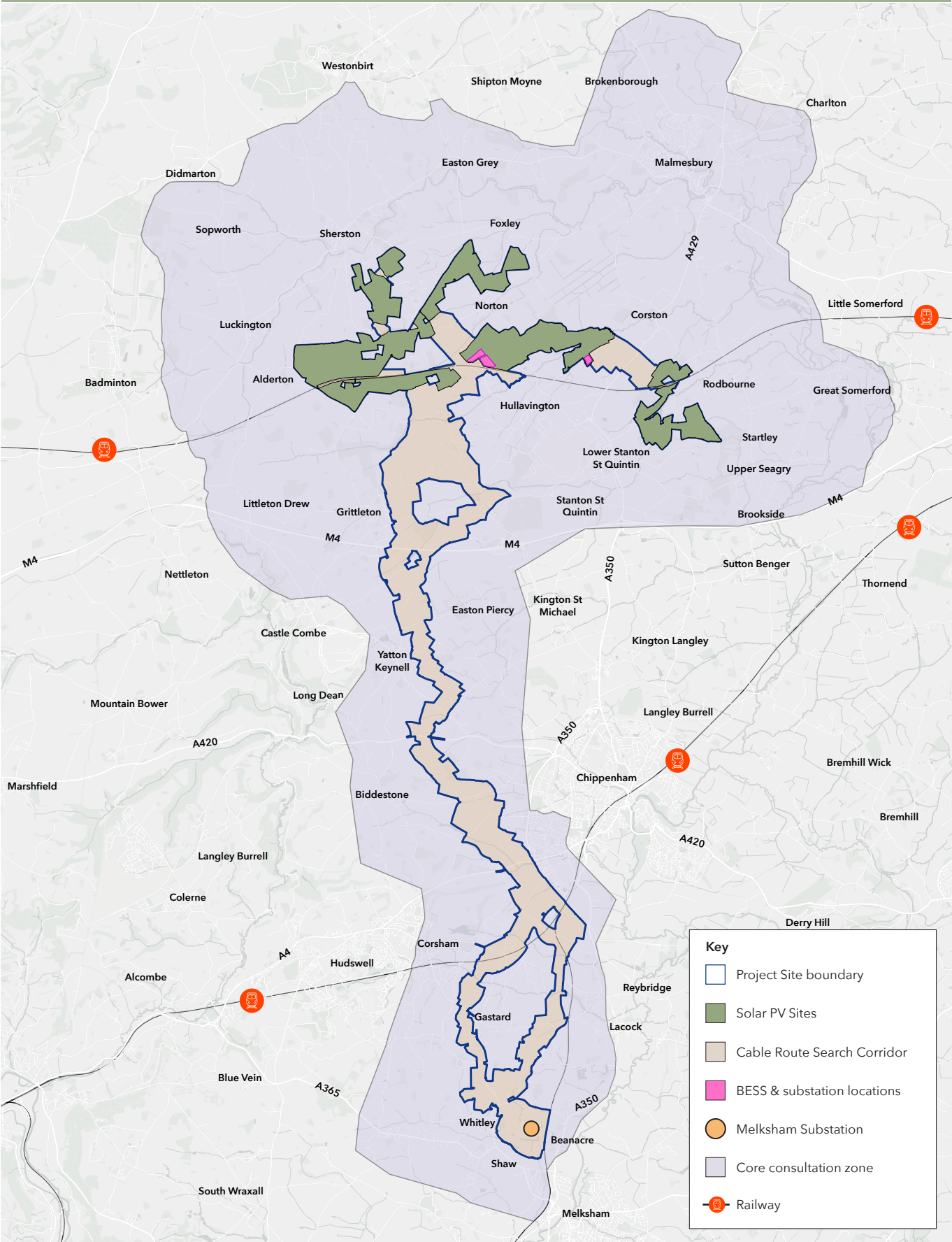
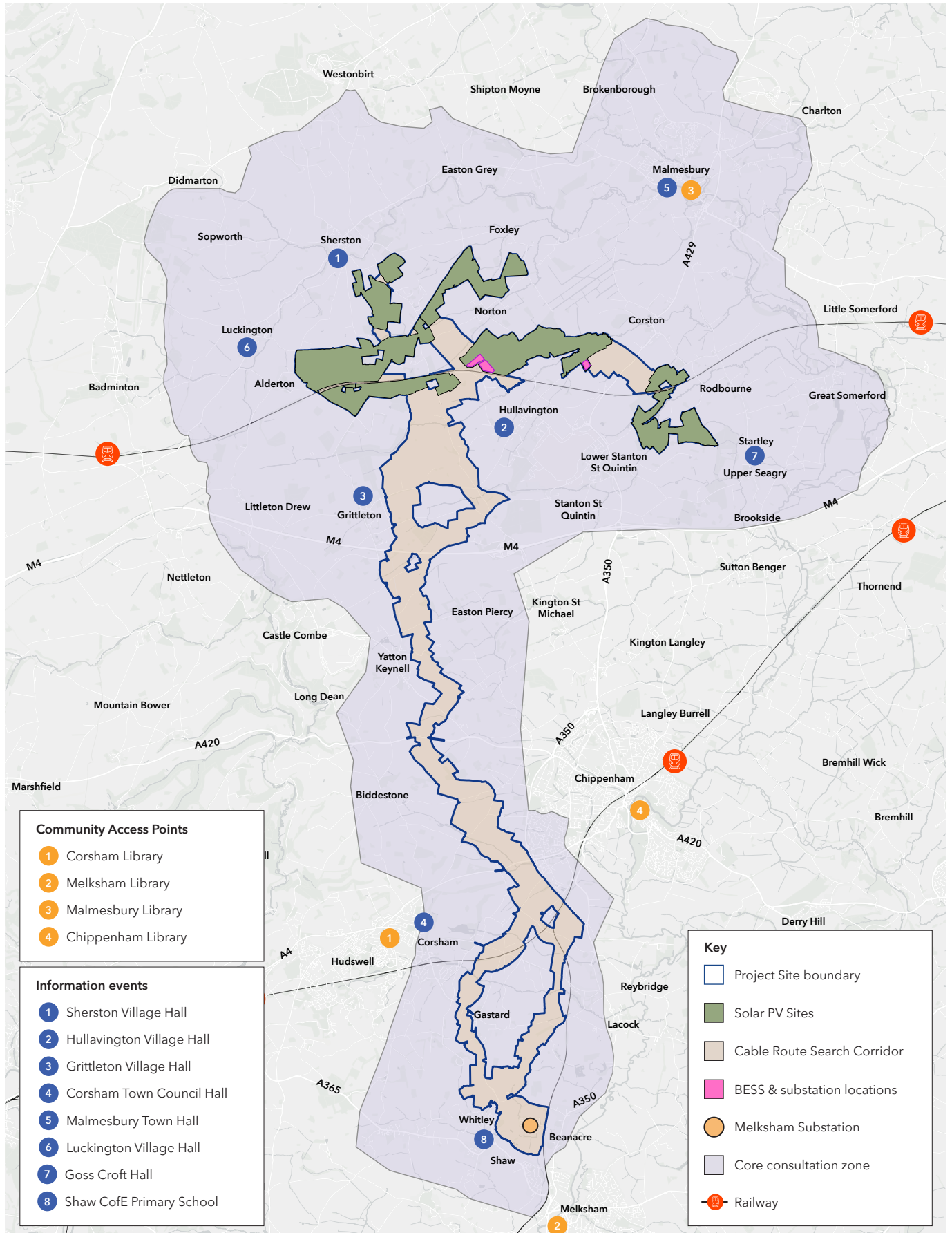
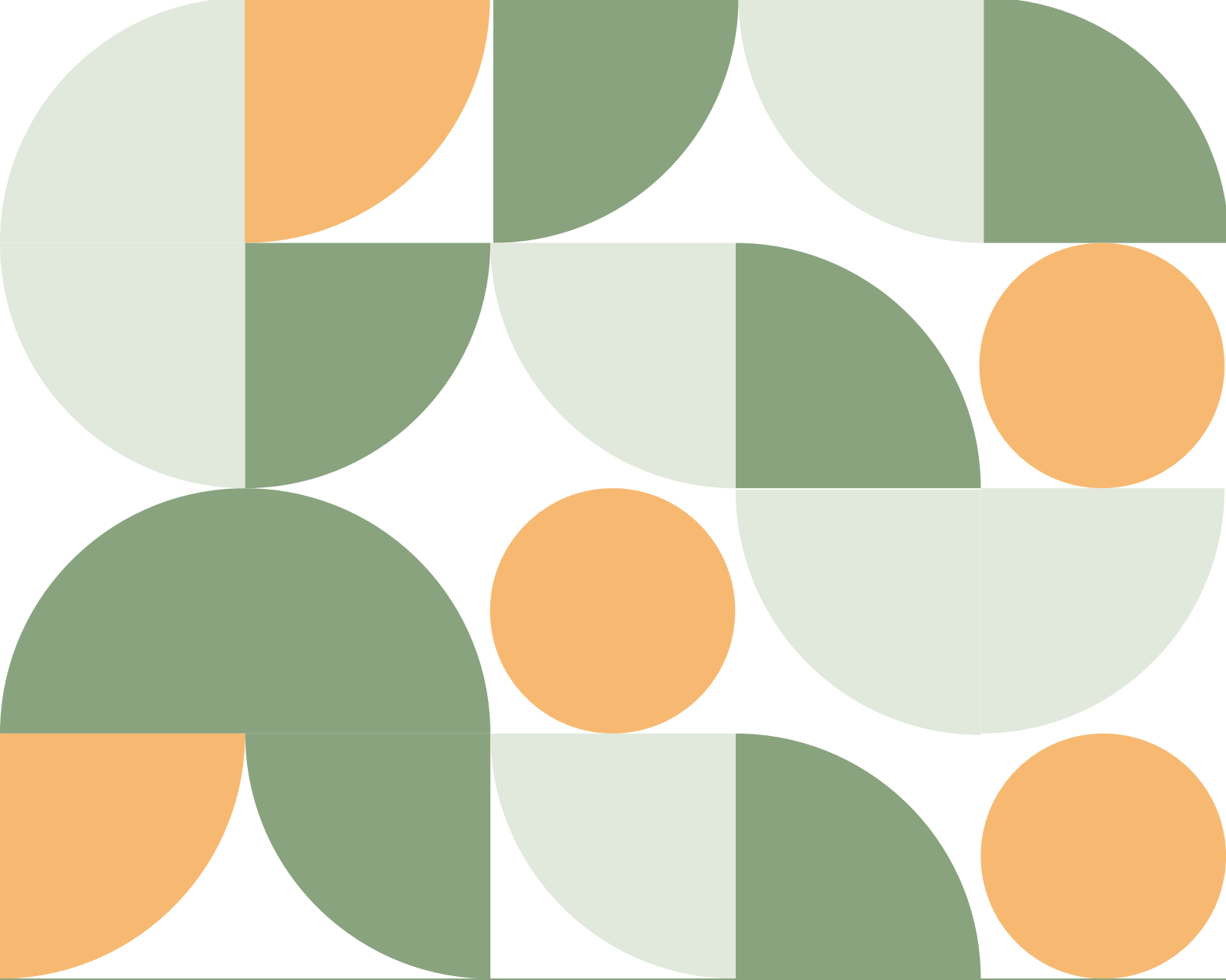


Figure 3: Core consultation zone

Appendix 2: Information event and community access point locations (corrected as of 27 January 2025)





Contact us

@ info@limesdownsolar.co.uk



Freephone 0808 175 6656

(open 09.00-17.00 Monday to Friday (excluding bank holidays) with voicemail outside these hours)



FREEPOST Lime Down Solar



www.limesdownsolar.co.uk

If you would like this document in large text or an alternative format please contact us on 0808 175 6656 or send an email to us at info@limesdownsolar.co.uk